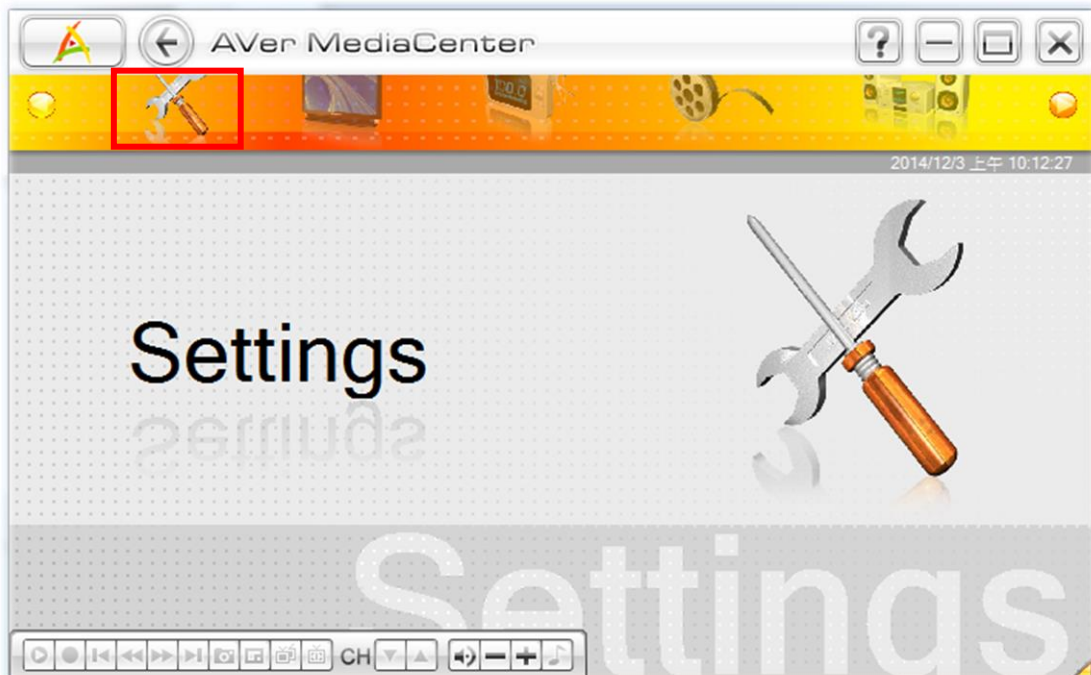


# AVerMedia Center

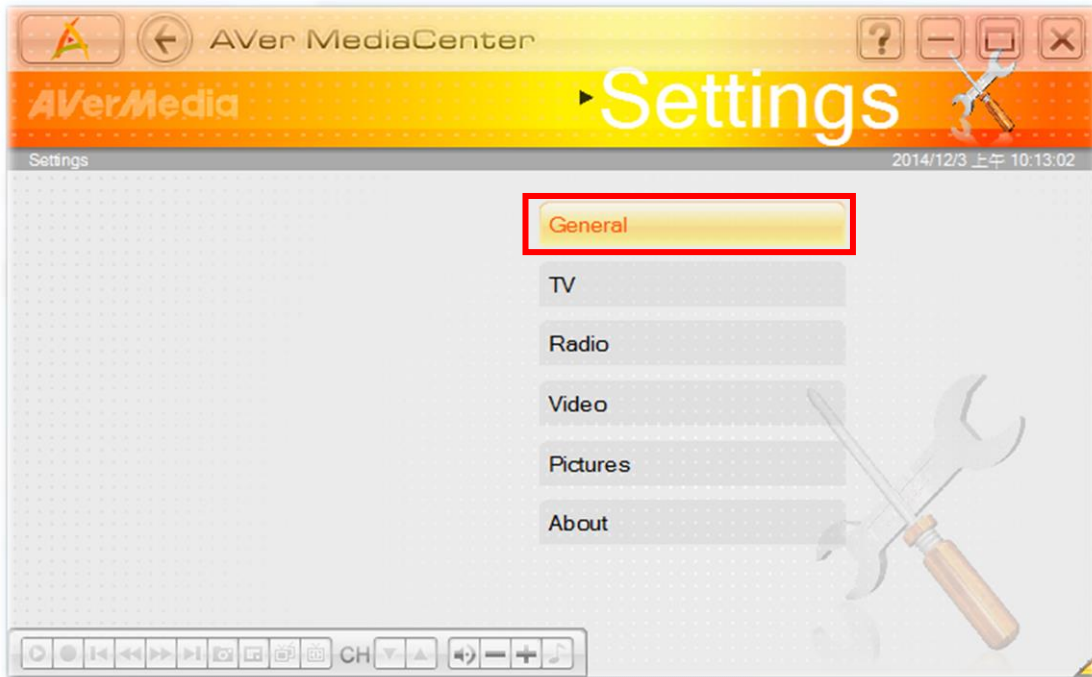
1. First, open the AVer Media Center, it look as follow. After opening, click the bottom to find the setting function.



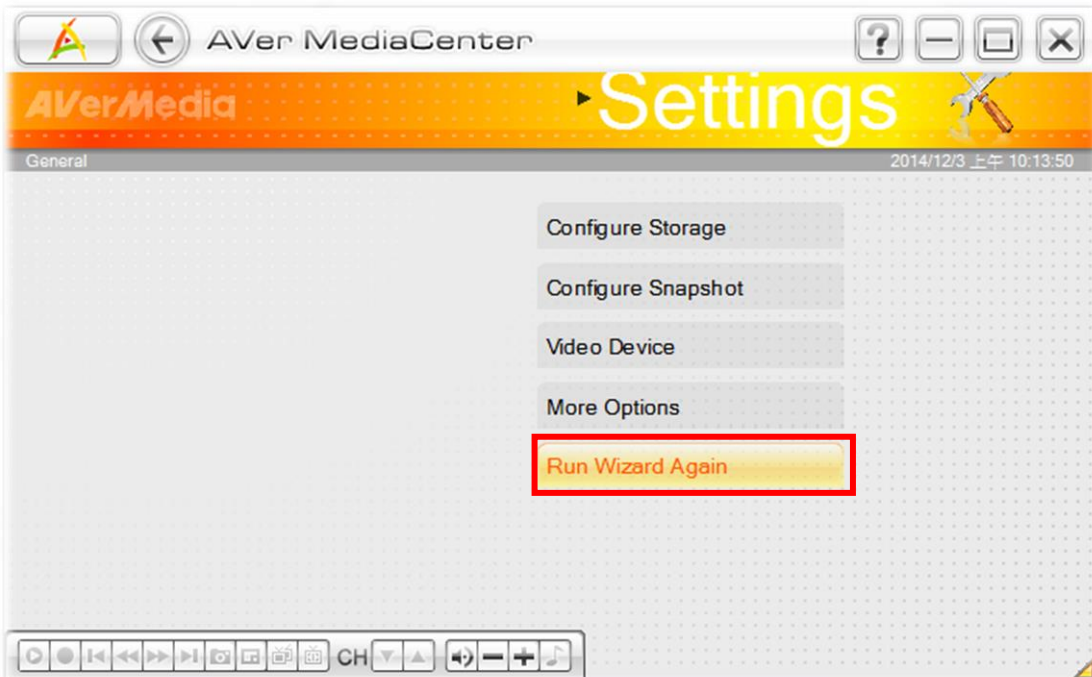
2. Click the 「Setting」 bottom.



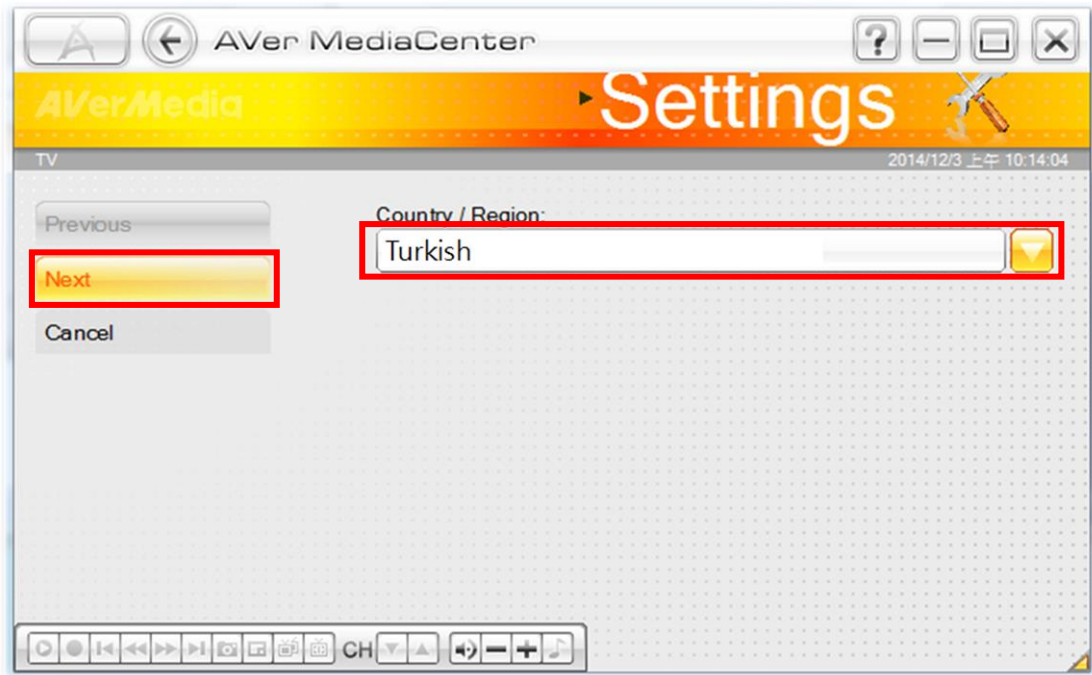
3. Click the 「General」 bottom.



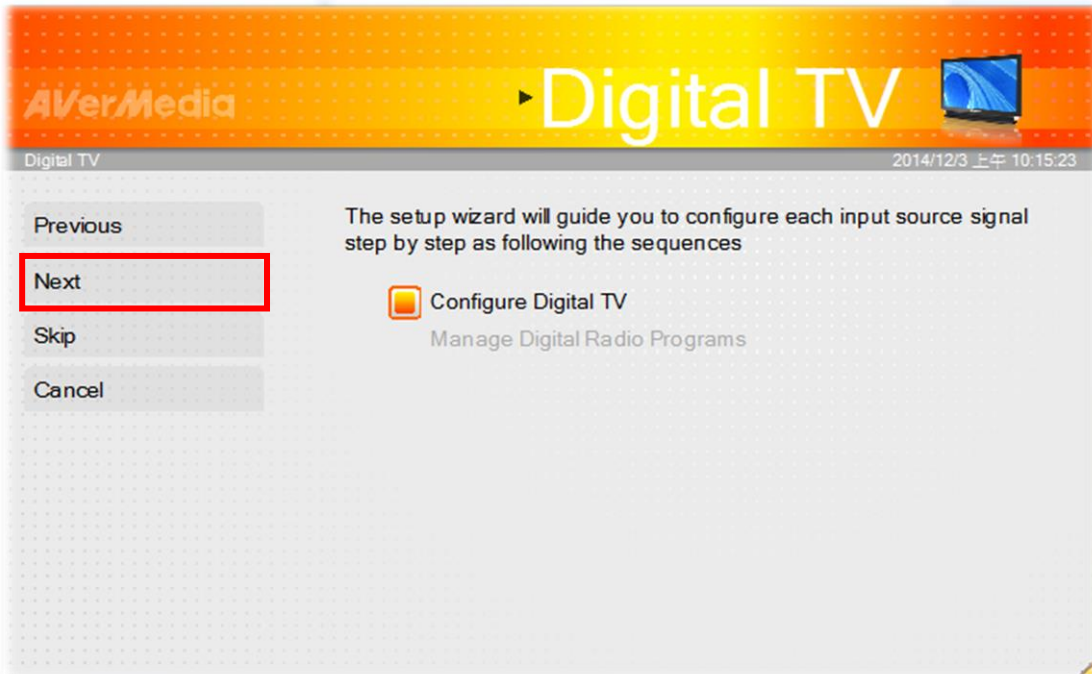
4. Click the 「Run Wizard Again」 bottom.



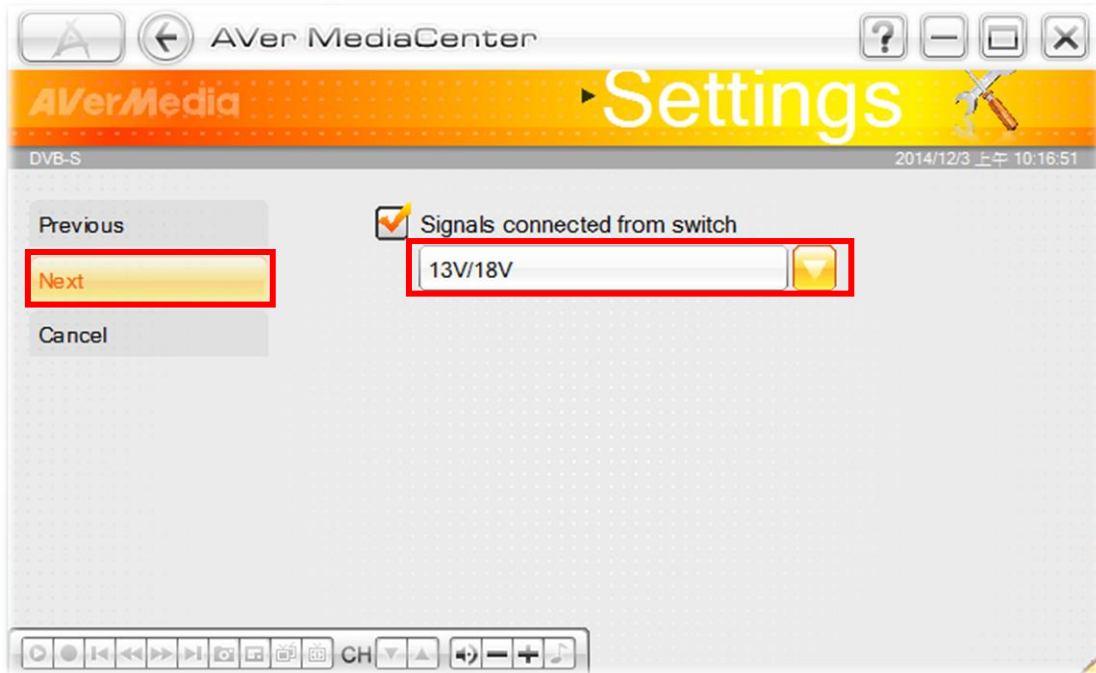
5. Select the 「Country/Region」 where you are, and click the 「Next」 bottom.



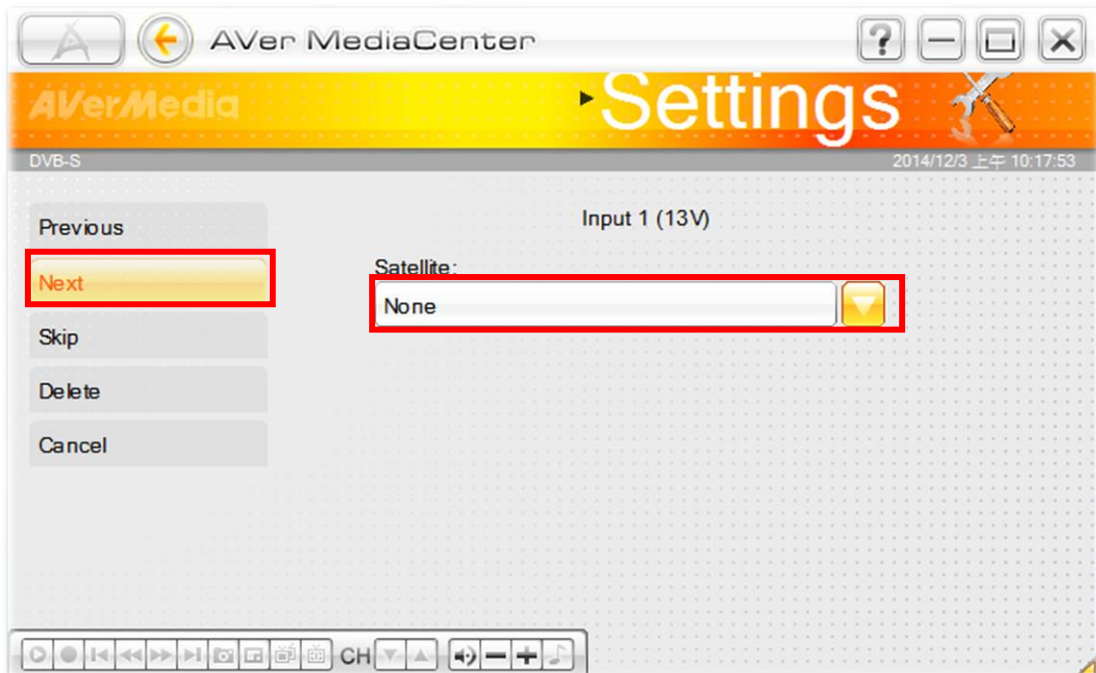
6. Click the 「Next」 bottom.



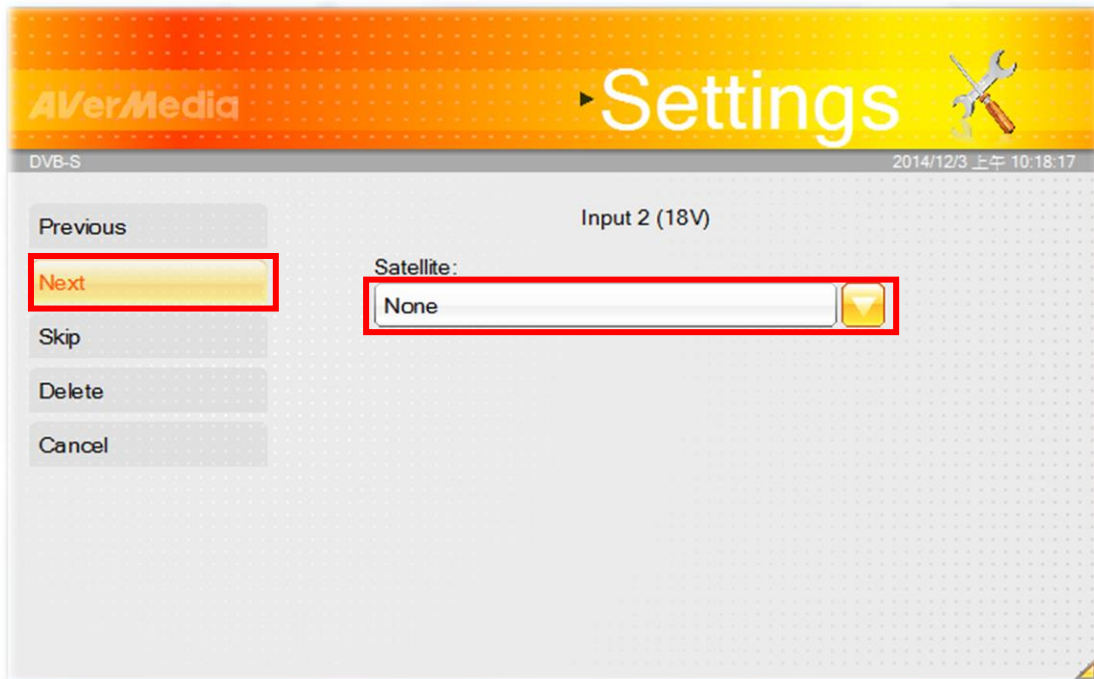
7. Select the 「13V/18V」 or the switch you need, and click the 「Next」 bottom.



8. Select the 「None」, and click the 「Next」 bottom.



9. Select the 「None」, and click the 「Next」 bottom.



10. Click the 「All Frequency Scan」 bottom to blind scan the programs.

