
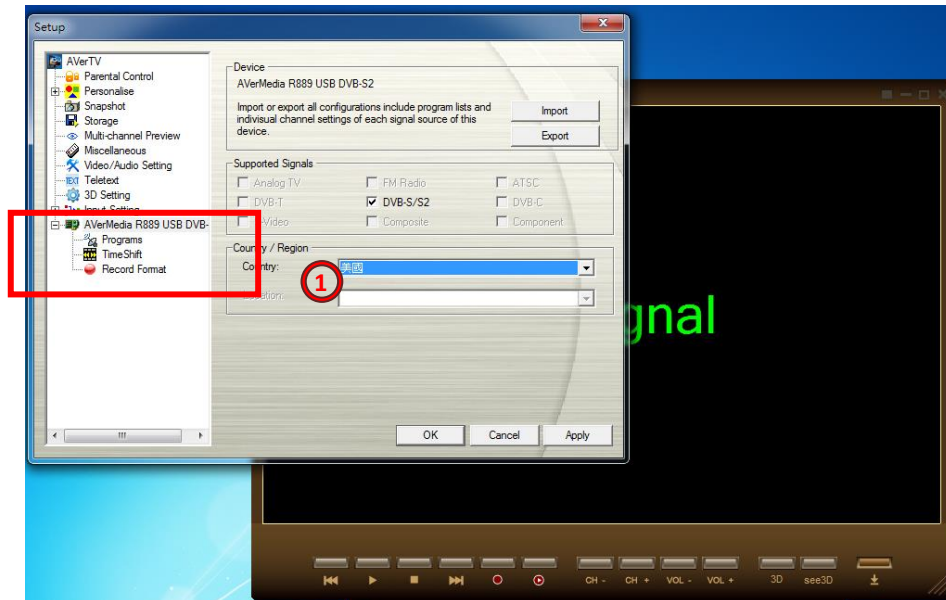
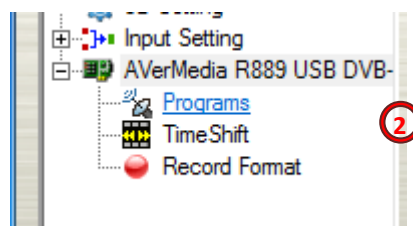



# AVerTV 3D

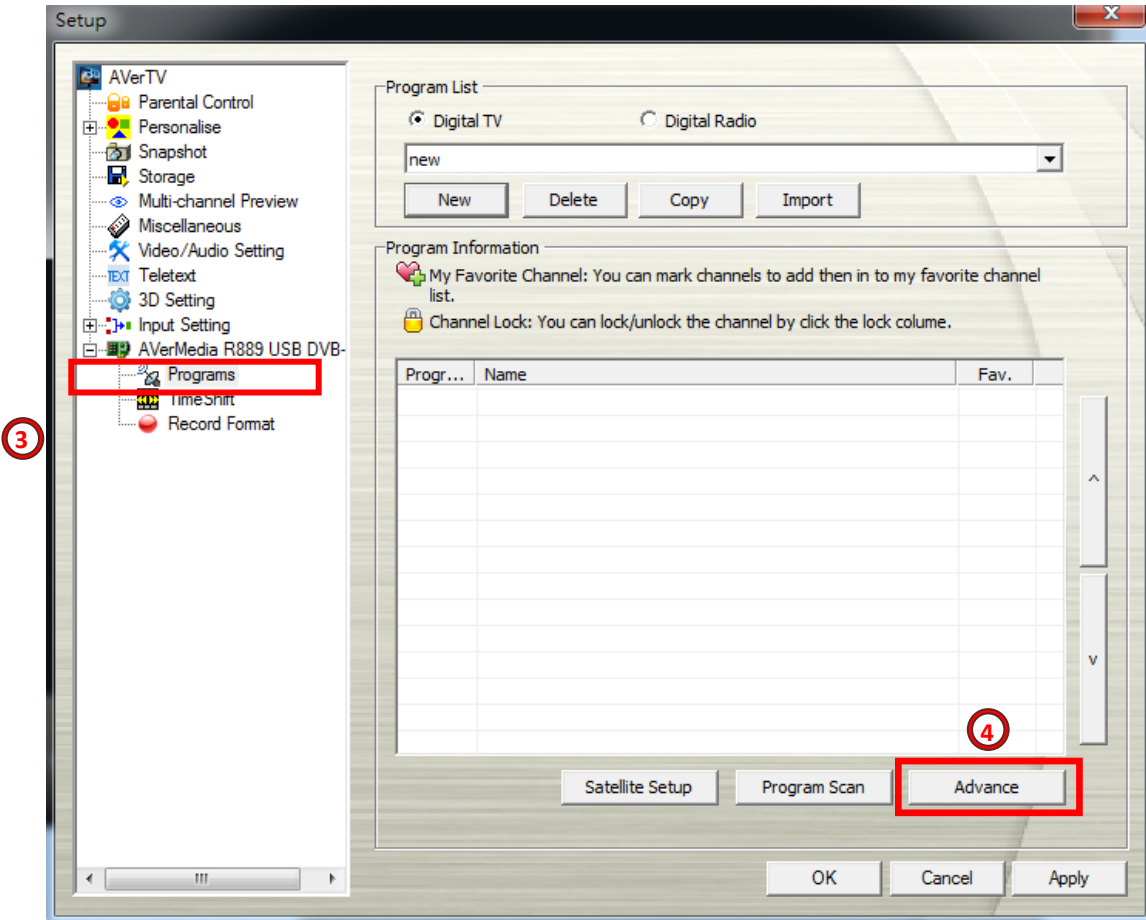
1. First, open the AVerTV3D  , it will look like as follow.



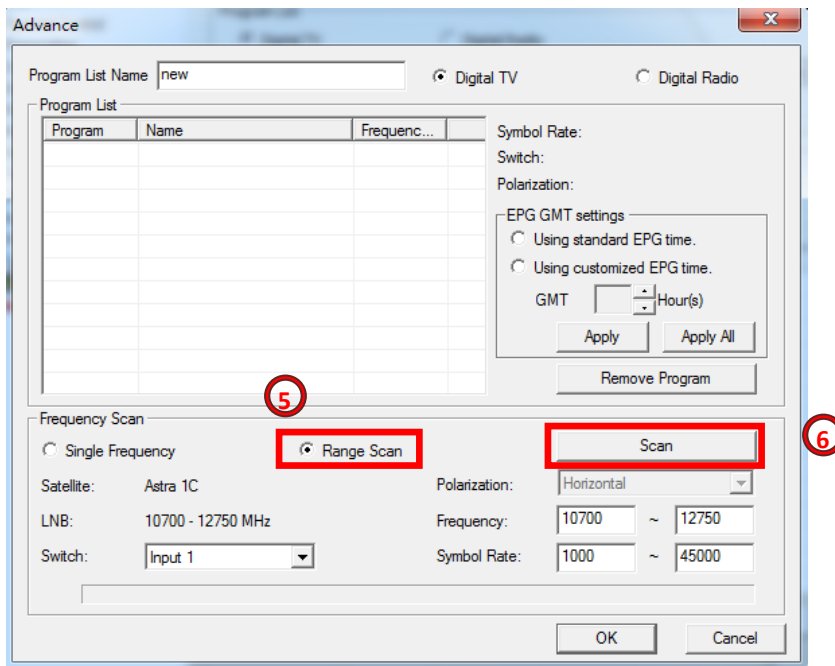
2. We click the symbol 「+」 beside the 「Aver Media R889USB DVB-S」 to open the list as the following picture.



3. Click  「Programs」.
4. Click the bottom 「Advance」.



- 5. Select 「 Range Scan 」
- 6. After Setting Frequency and Symbol Rate, Click 「 Scan 」 to blind scan the program.



- 7. Finally, it will start to blind scan the program.

